



Cat. No. 80042

IntelliPrep TRIO 240

Sample Preparation System

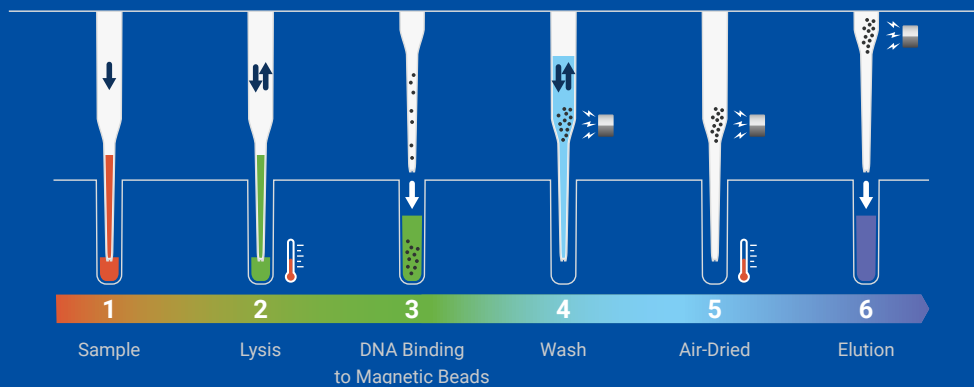


FFPE



Liquid Biopsy

No additional sample pretreatment



Nucleic Acid
Extraction

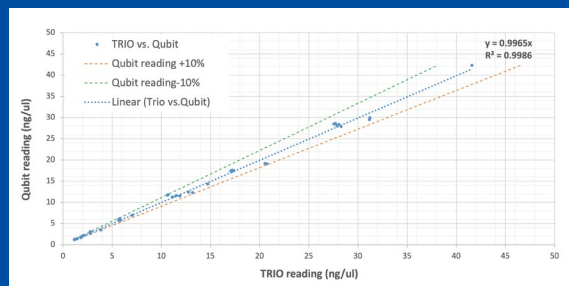


DNA
Quantification



PCR
Reaction Setup

Based on Qubit Fluorometric Quantification



Time for quantification depends on sample numbers (12~50min)




Total time for setup depends on conditions

- Delivering desired nucleic acid quantity and master mix at pre-determined volume
- Automated dilution of purified DNA upon needed
- Up to 4 assay kits for setting

Formalin-fixed, paraffin-embedded (FFPE) Samples

Automated FFPE deparaffinization


Cat. No.83015	IntelliPrep FFPE DNA Extraction Kit	
	Sample Type	FFPE
	Sample Input Volume	10 µm section
	Yield	Varies by sample section
	Elution Volume	60 µL
	Extraction Processing Time	135 min
	No. of Samples	48

Sample	TRIO		Q-brand	
	Yield (ng)	A260/A280	Yield (ng)	A260/A280
1	1300	1.85	1325	1.89
2	2060	1.83	500	1.91
3	924	1.88	795	1.98
4	1180	1.95	1230	1.95

The extracted DNA yield and quality of one 10 µm FFPE sample derived from lung cancer patients using TRIO FFPE DNA Extraction Kit and Q-brand manual extraction kit.

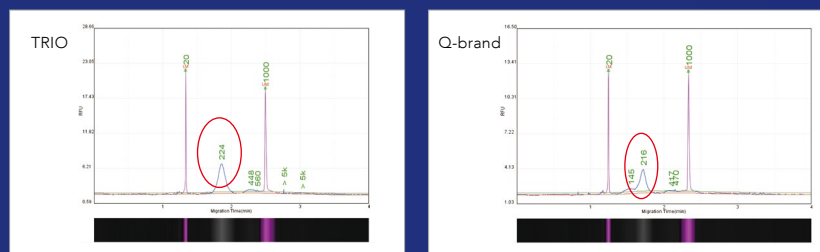
Liquid Biopsy Samples

Supports large volume of plasma sample extraction

Cat. No.83013	IntelliPrep cfDNA Extraction Kit (≤5mL)	
Cat. No.83028	IntelliPrep cfDNA Extraction Kit (≤10mL)	
	Sample Type	Plasma
	Sample Input Volume	Up to 10 mL plasma
	Yield	~6 ng/mL from healthy human plasma
	Elution Volume	60 µL
	Extraction Processing Time	150 min for 5mL; 180 min for 10 mL
	No. of Samples	48 for 5 mL plasma input 24 for 10 mL plasma input

	Average Yield (ng)	CV%
TRIO 240	40.5	9% (n=6)
Q-brand	35.68	24% (n=4)

Purity



The fragment size (200~240bp) of extracted cell-free DNA from 4 mL plasma samples by IntelliPrep cfDNA Extraction Kit and Q-brand manual kit were both examined by capillary electrophoresis.

Cell-free DNA was purified from 4 mL healthy human plasma using IntelliPrep cfDNA Extraction Kit and Q-brand manual kit.



Ordering Information		
	Products	Cat. No.
IntelliPrep Extraction Kits	IntelliPrep TRIO 240 Sample Preparation System	80042
	IntelliPrep Viral DNA/RNA Extraction Kit	83012
	IntelliPrep cfDNA Extraction Kit (≤5mL)	83013
	IntelliPrep cfDNA Extraction Kit (≤10mL)	83028
	IntelliPrep FFPE DNA Extraction Kit	83015
	IntelliPrep FFPE RNA Extraction Kit	83016
	IntelliPrep Blood Genomic DNA Extraction Kit	83026
	IntelliPrep Blood total RNA Extraction Kit	83027



Website



LinkedIn



CONTACT US

+886-2-2627-5878 marketing@plexbio.com www.plexbio.com

RUO STATEMENT For Research Use Only. Not for diagnostic procedures.