

## Installing Assay Kit Apps

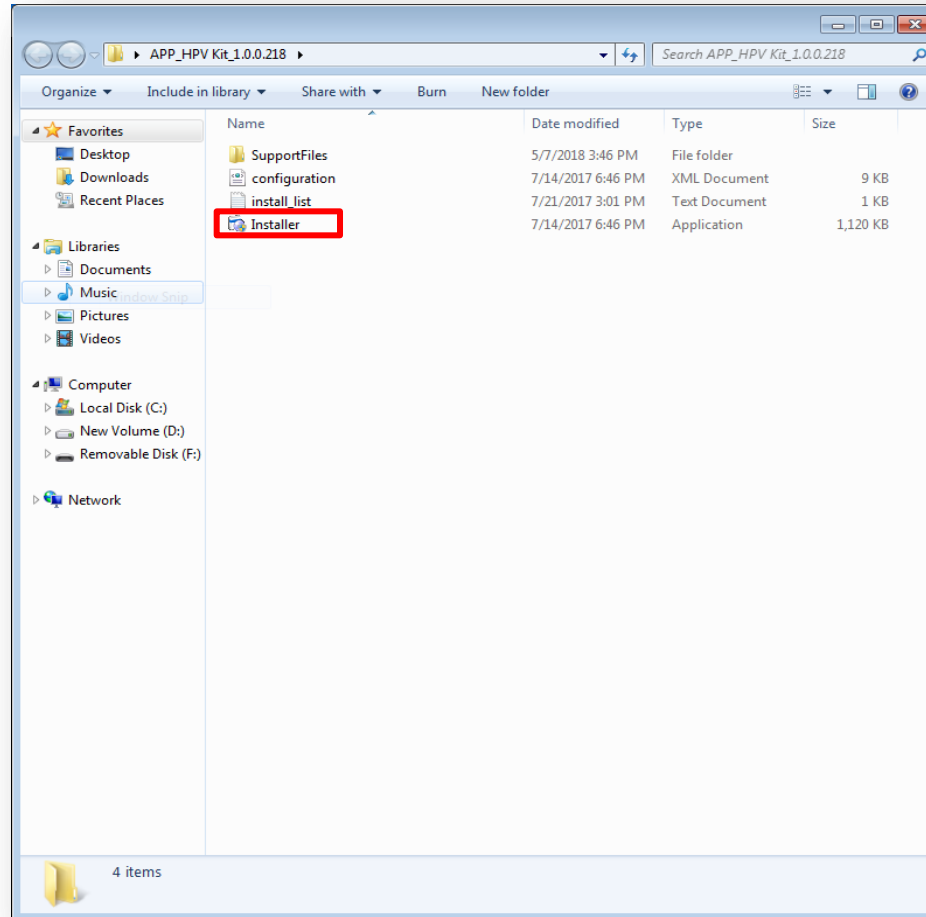
Software version 1.1.9.1796



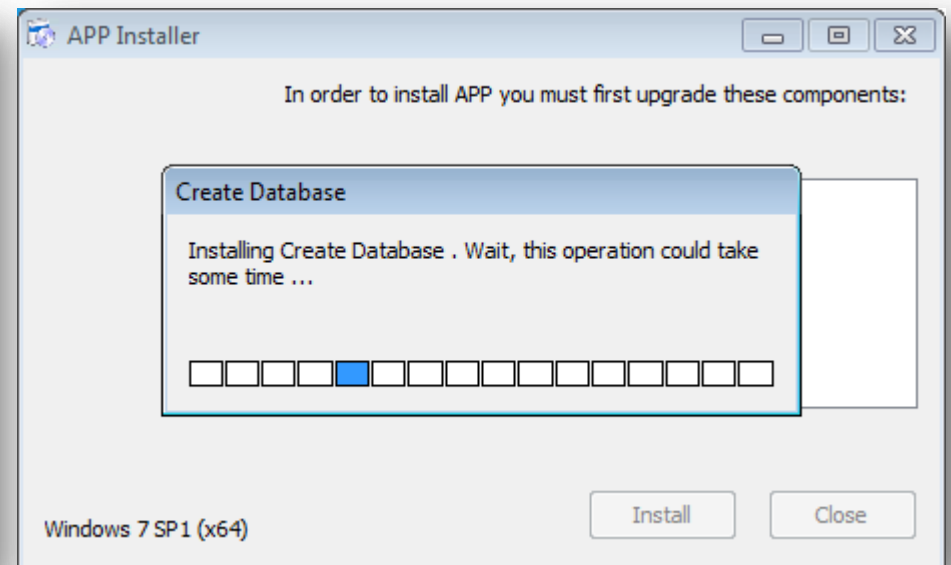
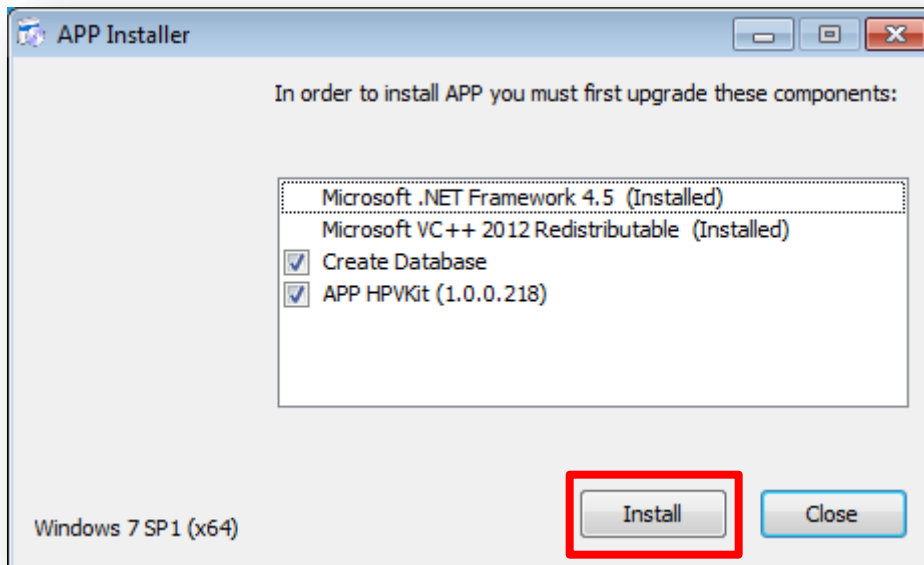
## **Before you begin ...**

- The Kit App for an assay must be installed prior to installing the corresponding ENC file.
- The previous version of an assay's Kit App is automatically removed when installing a new version

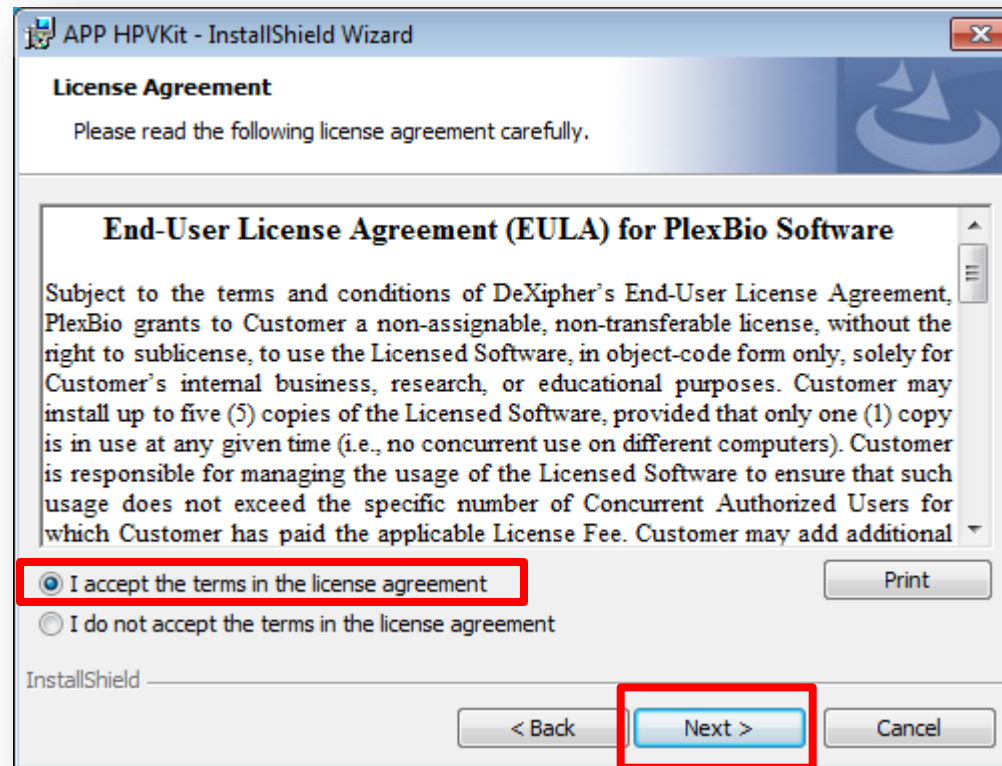
- Click **Installer** to initiate the installation.



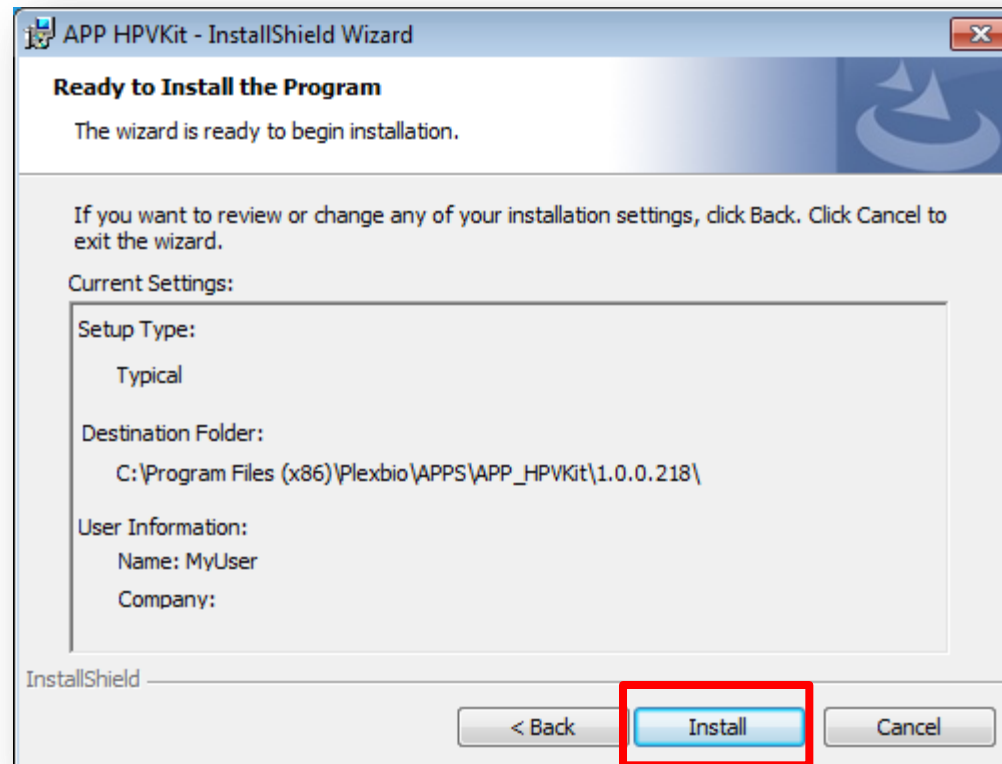
- Click **Install** and Wait for a while.



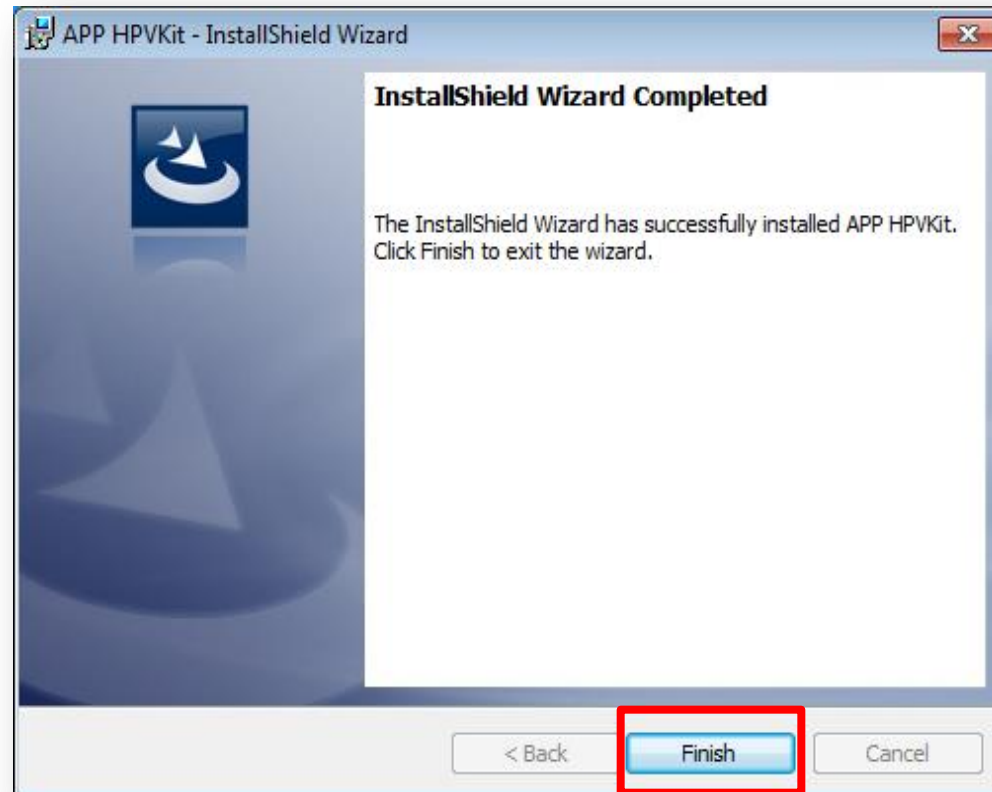
- Click **Accept** the terms
- Click **Next**



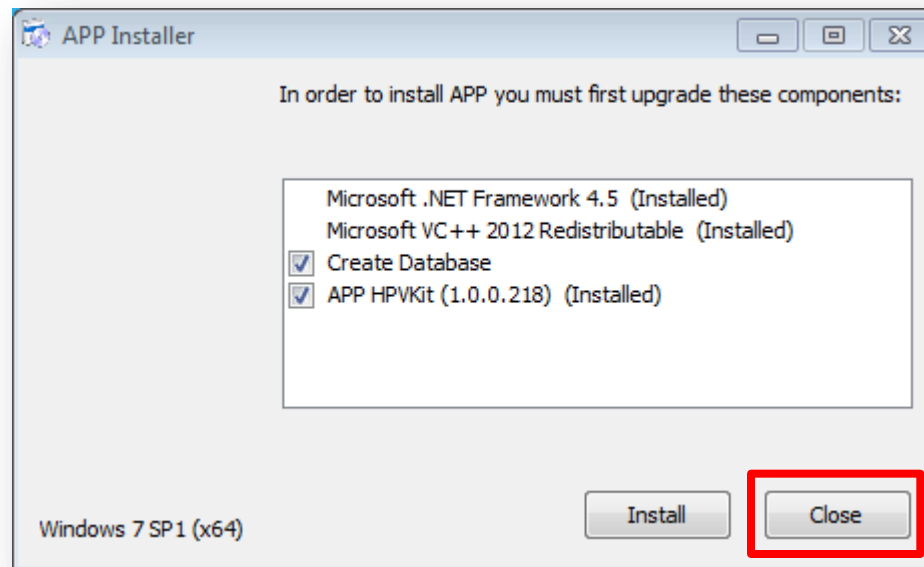
- Click **Install**



- Click **Finish**



- Click **Close**.
- The App will be recognized by DeXipher automatically once DeXipher is started.
- **DO NOT** log in to the Kit App via the desktop icon. DeXipher software will automatically link to the corresponding Kit App for data analysis.





# Thank You

## **PlexBio**

6F-1, No. 351, Yangguang St.  
Neihu District, Taipei City 11491, Taiwan  
+866-2-2627-5878 | [PlexBio.com](http://PlexBio.com)  
[service@plexbio.com](mailto:service@plexbio.com)