

## Installing or Updating DeXipher Software

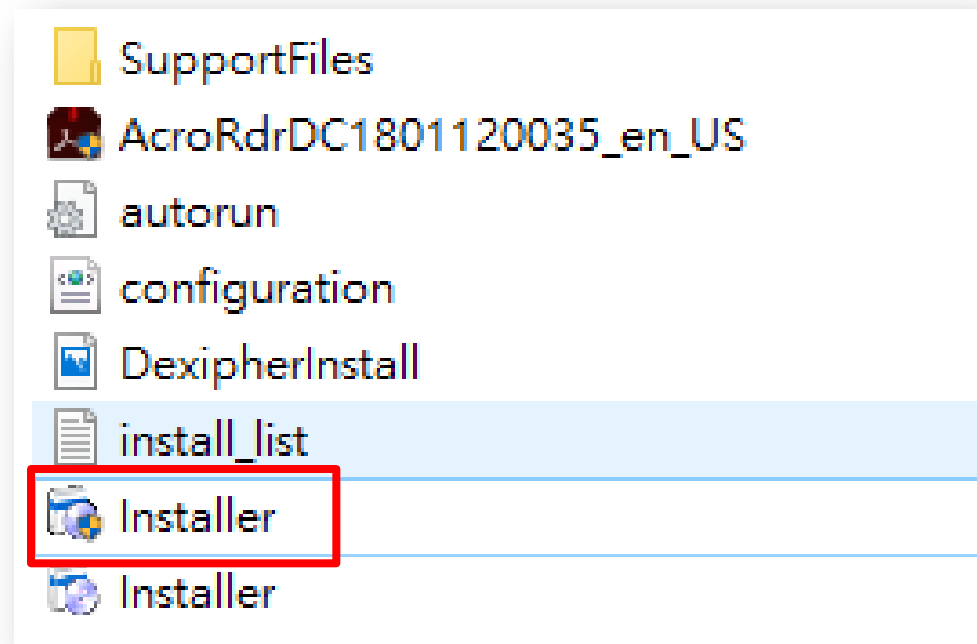
*Software version 1.1.9.1796*



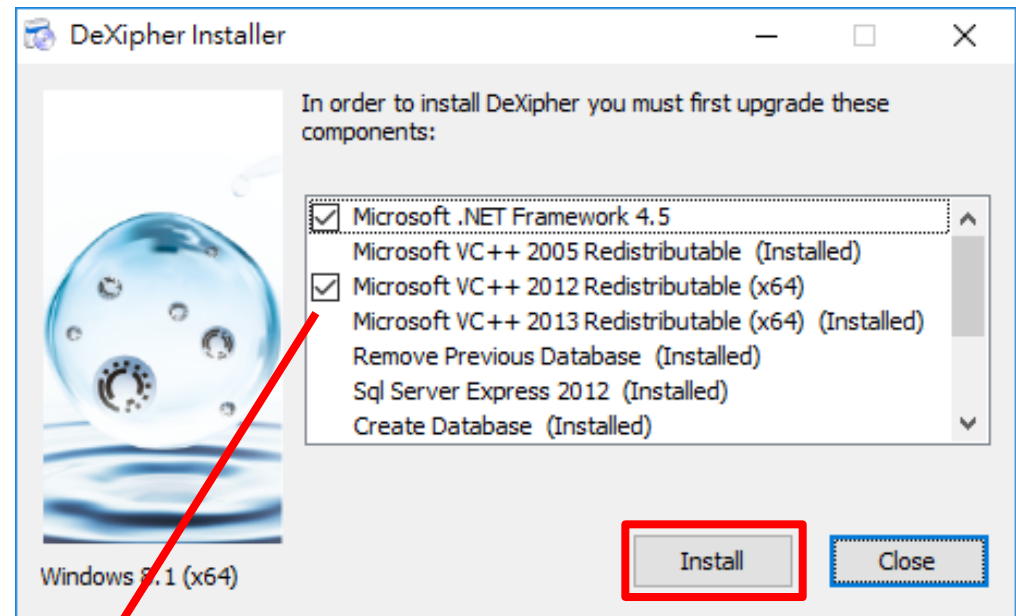
## **Please note:**

The old software version is automatically removed when installing the new version.

- Click **Installer** to initiate the installation

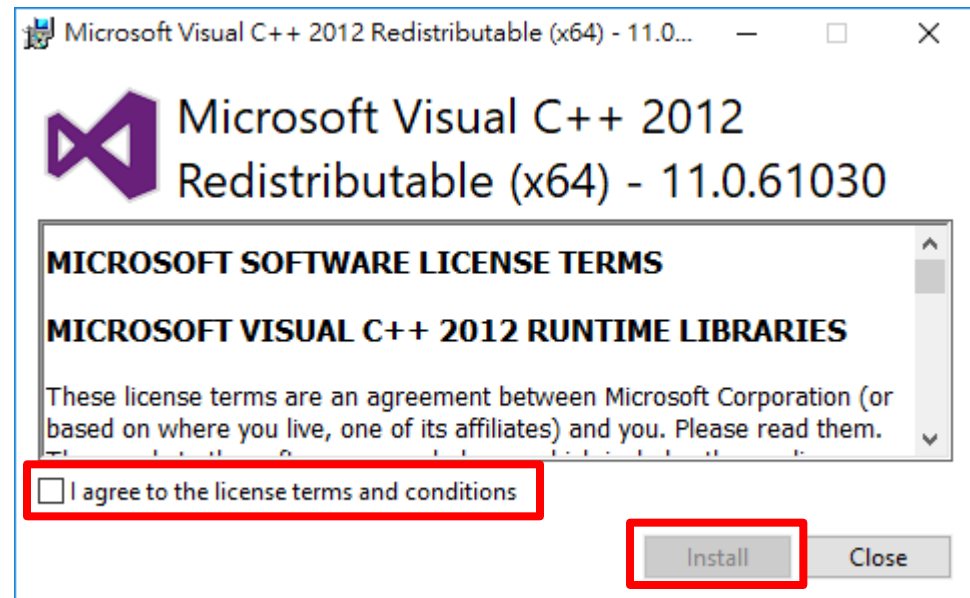


- Click **Install** to proceed with the installation

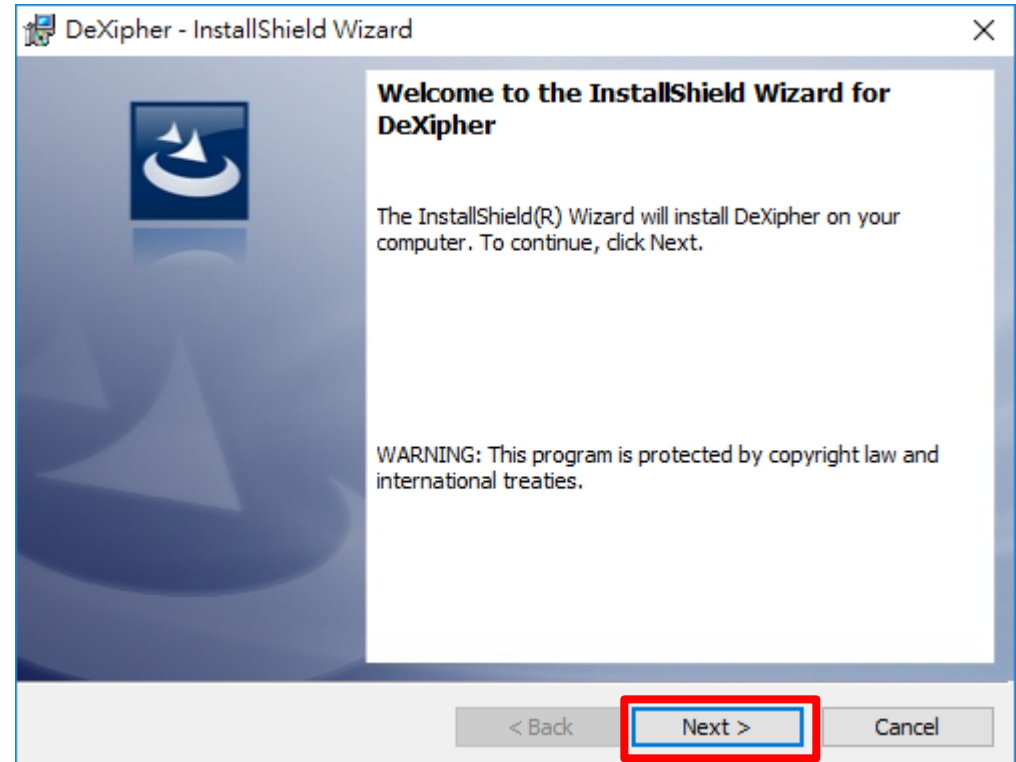


\*The number of software needs to be installed varies due to the difference of setting or configuration between computers.

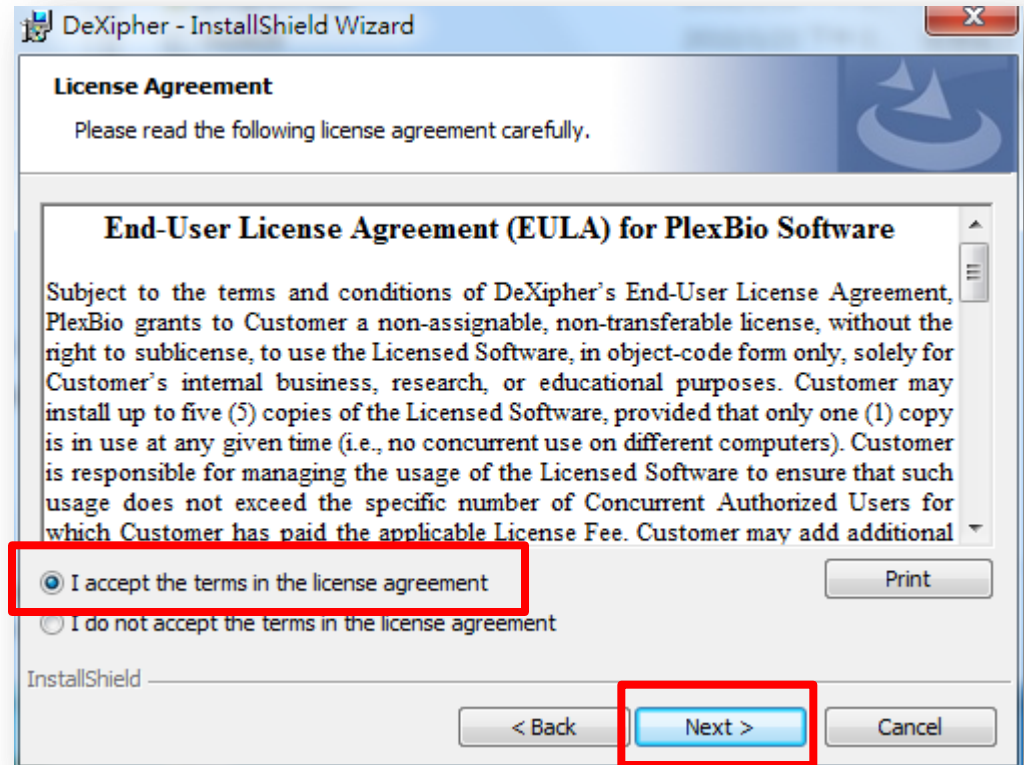
- Accept the terms in the license agreement
- Click ***Install***



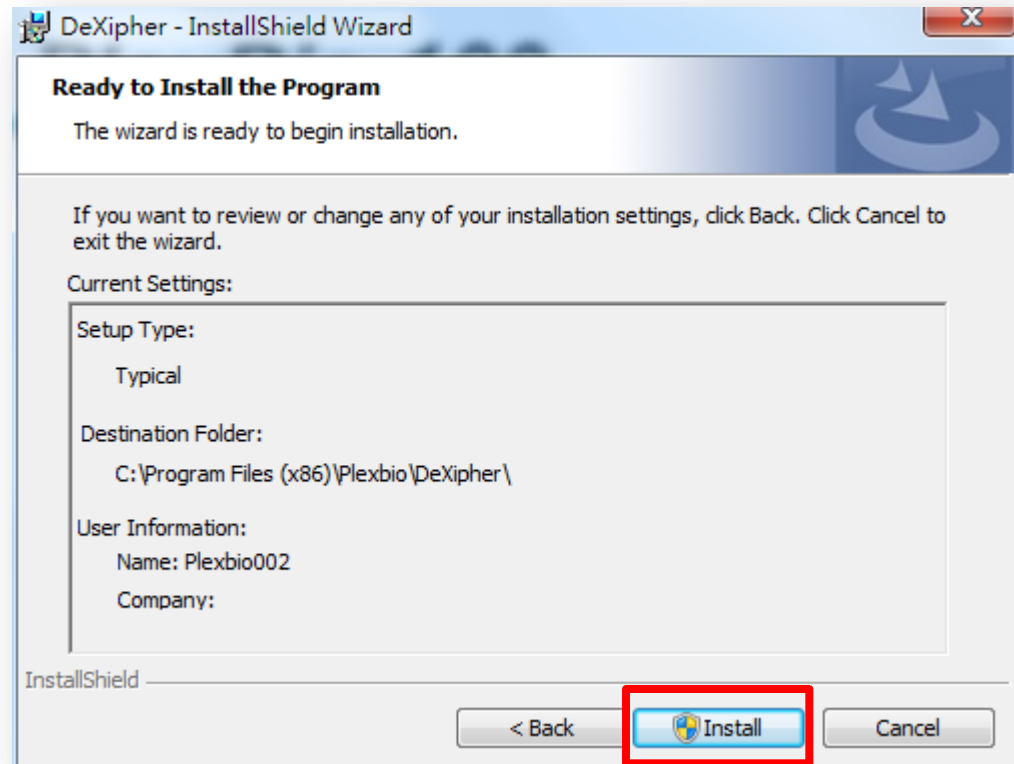
- Click **Next**



- Accept the terms in the license agreement
- Click **Next**

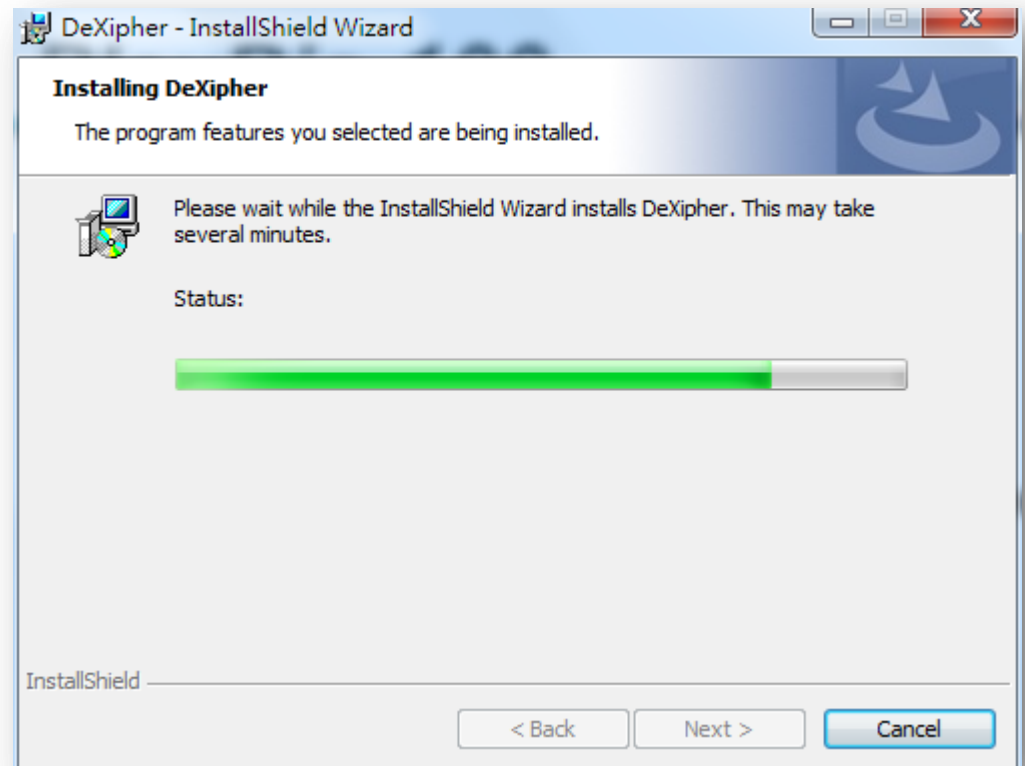


- Click ***Install***

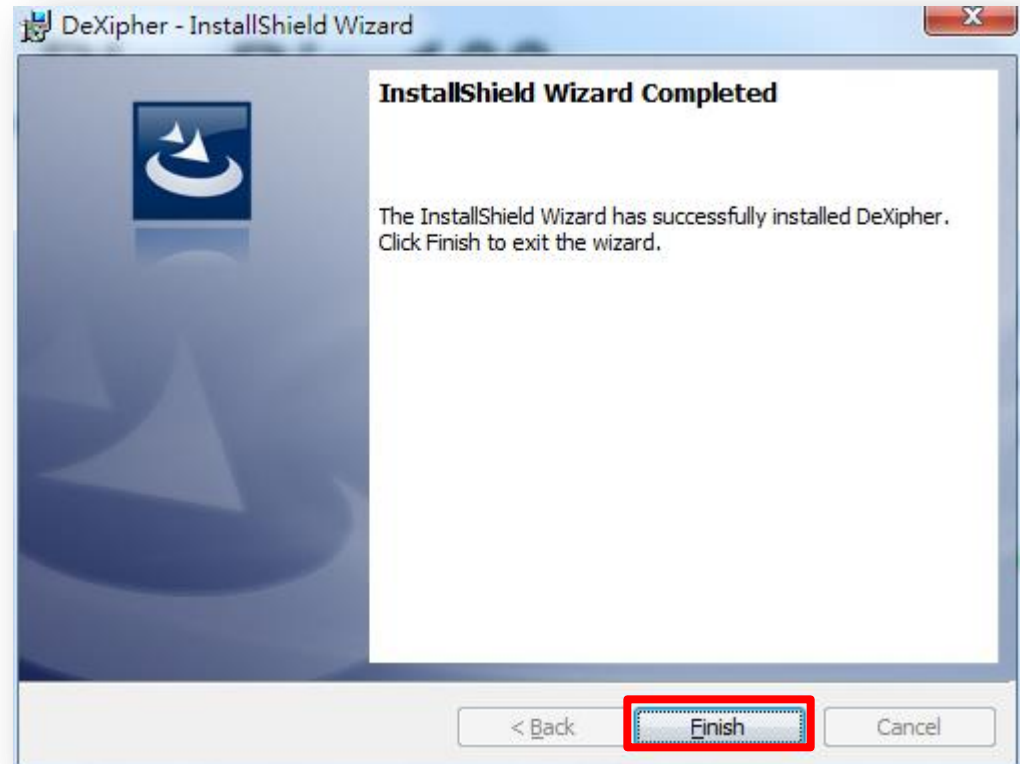




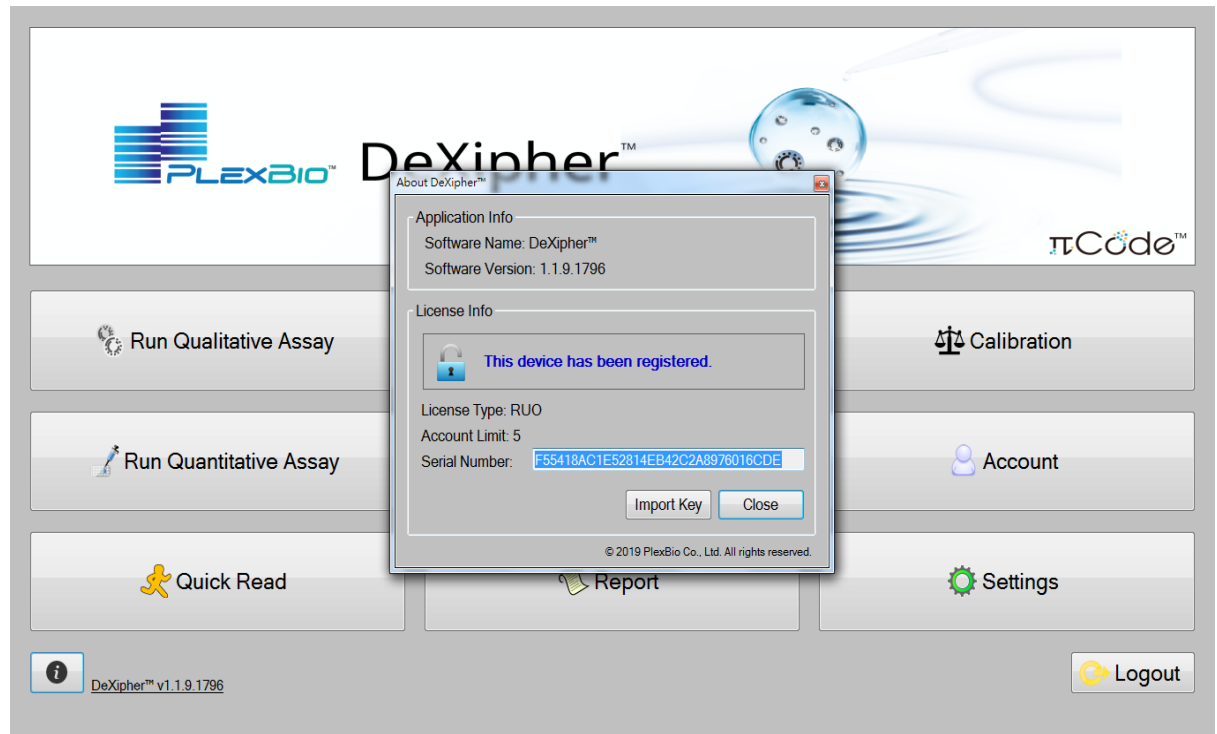
- Wait until the installation is finished



- Click **Finish**



- Initiate DeXipher
- Check DeXipher version to ensure successful installation

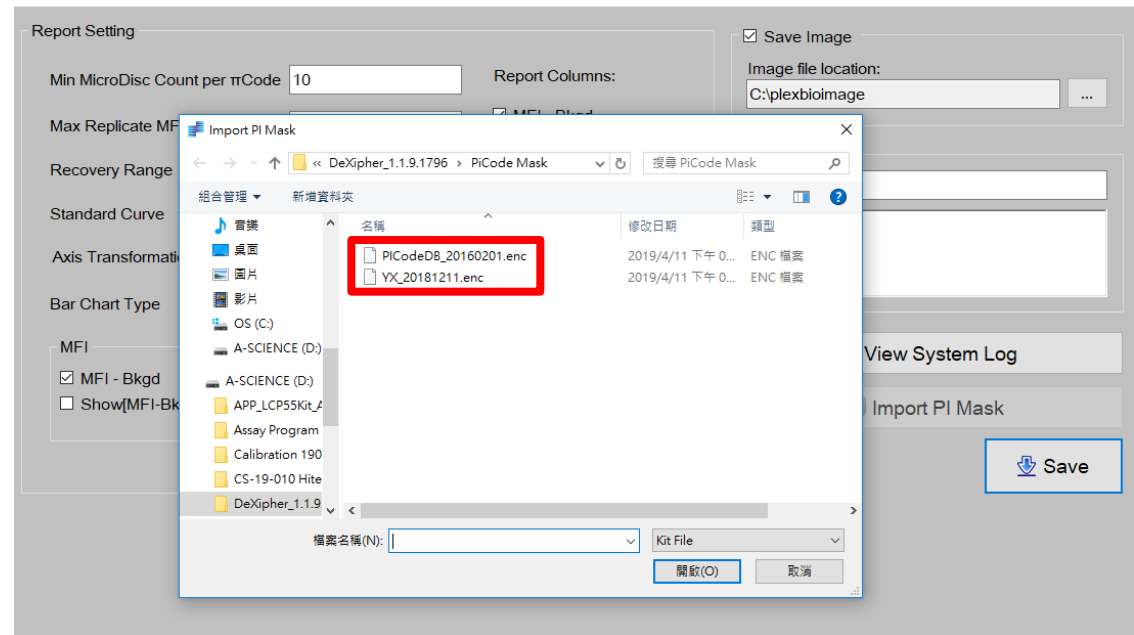


- Go to **Settings**
- Click **Import PI Mask**

The screenshot displays the DeXipher software interface. On the left is a navigation sidebar with icons for Home, Quick Read, Run, Report, Calibration, Settings (highlighted), Account, and Logout. The main content area is titled 'Report Setting' and contains several configuration options:

- Min MicroDisc Count per πCode: 10
- Max Replicate MFI CV: 100 %
- Recovery Range: ± 30 %
- Standard Curve: Best Fit
- Axis Transformation: Log(x)-Linear(y)
- Bar Chart Type: MFI (selected), Concentration
- Report Columns: MFI - Bkgd, MFI SD, MFI CV, Dilution Factor, Obs. Conc., Unit, Exp. Conc., (Obs/Exp)\*100
- Save Image: checked
- Image file location: C:\plexbioimage
- Testing Lab Info: Lab Name, Lab Address
- View System Log
- Import PI Mask** (highlighted with a red box)
- Language Select: English
- Save

- Import **PI Mask**  
**PICodeDB\_20160201.enc**  
and **YX\_20181211.enc**



# Thank You

## **PlexBio**

6F-1, No. 351, Yangguang St.  
Neihu District, Taipei City 11491, Taiwan  
+866-2-2627-5878 | [PlexBio.com](http://PlexBio.com)  
[service@plexbio.com](mailto:service@plexbio.com)